

MATERIAL SPECIFICATION

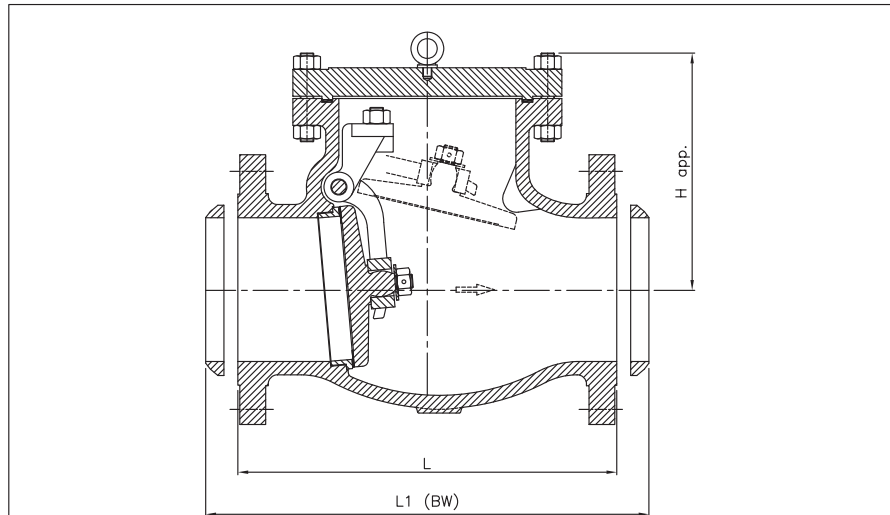
PART NAME	MATERIAL		MATERIAL	
BODY	A 216 WCB	A 217 WC6	A 351 CF8	A 351 CF8M
DISC	CA15/13% Cr FACING ON WCB	WC6+13% Cr.	A 351 CF8	A 351 CF8M
SEAT RING 1	CA15/A 515 70+ 13%Cr. FACING	SS 304	T304	T316
TOP COVER	A 216 WCB	A 217 WC6	A 351 CF8	A 351 CF8M
STUD & NUT	A 193 B7/A 194 2H	A 193 B16/A 194 Gr.7	A 193 B8/A 194 Gr.8	
BRACKET STUD & NUT	A 193 B8/A 194 8		A 193 B8/A 194 Gr.8	
GASKET	SPW SS 304/316 WITH GRAFOIL		SPW SS 304/316 WITH GRAFOIL	
WASHER	T410	T304	T304	T316
DISC NUT	A 194 Gr.8		A 194 Gr.8	
HINGE PIN	T410	T304	T304	T316
SPLIT PIN	T410	T304	T304	T316
NAME PLATE	ALUMINIUM/S.S.		ALUMINIUM/S.S.	
HINGE	A 216 WCB	A 217 WC6	A 351 CF8	A 351 CF8M
HINGE BRACKET	A 216 WCB	A 217 WC6	A 351 CF8	A 351 CF8M
LIFTING EYE BOLT 2	ASTM A 105		ASTM A 105	

1- SEAL WELD 3"NB AND ABOVE
2- LIFTING EYE BOLT 8"/6"NB AND ABOVE
3- DISC & SEAT STELLITING OPTIONAL

4- DRAIN PLUG OPTIONAL
5- DASHPOT ARRANGEMENT OPTIONAL

04

SWING CHECK VALVE



DIMENSION TABLE 150 CLASS

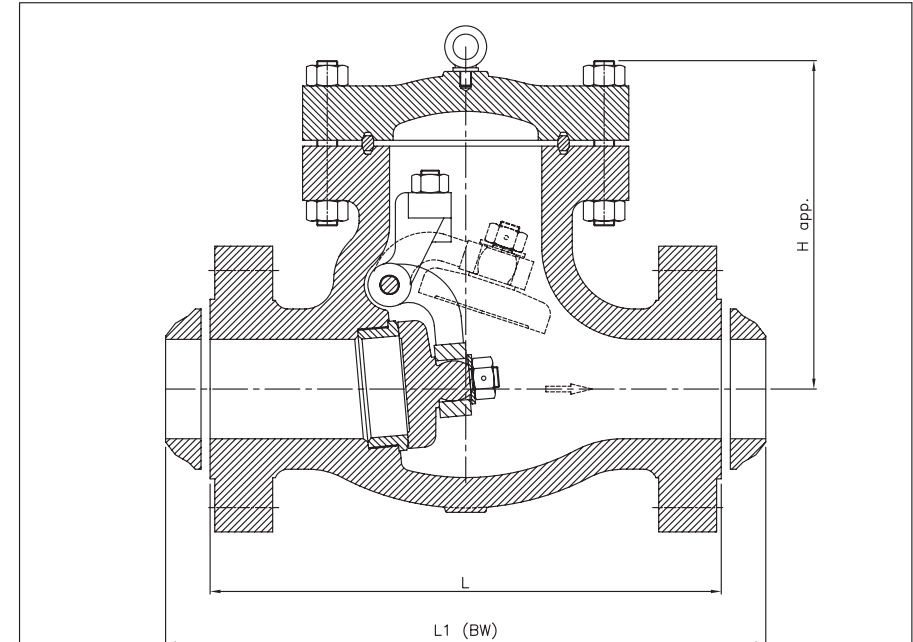
VALVE SIZE in mm	2 50	2.5 65	3 80	4 100	5 125	6 150	8 200	10 250	12 300	14 350	16 400	18 450	20 500	22 550	24 600	26 650	28 700	30 750	32 800	36 900
L	8.0 203	8.5 216	9.5 241	11.5 292	13 330	14.0 356	19.5 495	24.5 622	27.5 698	31.0 787	34.0 864	38.5 978	38.5 978	42.0 1067	51.0 1295	51.0 1295	57.0 1448	60.0 1524	-	77.0 1956
L1	8.0 203	8.5 216	9.5 241	11.5 292	13 330	14.0 356	19.5 495	24.5 622	27.5 698	31.0 787	34.0 864	38.5 978	38.5 978	42.0 1067	51.0 1295	51.0 1295	57.0 1448	60.0 1524	-	77.0 1956
H app	145	165	170	205	225	255	300	340	485	465	595	545	600	695	750	775	800	825	-	900
Wt. kg app(F/E)	18	25	32	50	70	85	126	220	315	450	570	725	1050	1255	1310	1500	1650	1865	-	-

DIMENSION TABLE 300 CLASS

VALVE SIZE in mm	2 50	2.5 65	3 80	4 100	5 125	6 150	8 200	10 250	12 300	14 350	16 400	18 450	20 500	22 550	24 600	26 650	28 700	30 750	36 900
L	10.5 267	11.5 292	12.5 318	14.0 356	15.7 400	17.5 444	21.0 533	24.5 622	28.0 711	33.0 838	34.0 864	38.5 978	40.0 1016	44.0 1118	53.0 1346	53.0 1346	59.0 1499	62.7 1594	82.0 2083
L1	10.5 267	11.5 292	12.5 318	14.0 356	15.7 400	17.5 444	21.0 533	24.5 622	28.0 711	33.0 838	34.0 864	38.5 978	40.0 1016	44.0 1118	52.9 1346	52.9 1346	59.0 1499	62.7 1594	82.0 2083
H app	155	215	185	220	245	275	300	375	430	520	560	686	610	-	-	-	-	-	-
Wt. kg app(F/E)	25	40	60	80	105	130	215	345	470	685	998	1050	1220	-	-	-	-	-	-

DIMENSION TABLE 600 CLASS

VALVE SIZE in mm	2 50	2.5 65	3 80	4 100	5 125	6 150	8 200	10 250	12 300	14 350	16 400	18 450	20 500	22 550	24 600	26 650	28 700	30 750	36 900
L	11.5 292	13.0 330	14.0 356	17.0 432	20.0 508	22.0 559	26.0 660	31.0 787	33.0 838	35.0 889	39.0 991	43.0 1092	47.0 1194	50.9 1295	55.0 1397	57.0 1448	63.0 1600	65.0 1651	82.0 2083
L1	11.5 292	13.0 330	14.0 356	17.0 432	20.0 508	22.0 559	26.0 660	31.0 787	33.0 838	35.0 889	39.0 991	43.0 1092	47.0 1194	50.9 1295	55.0 1397	57.0 1448	62.9 1600	65.0 1651	82.0 2083
H app	160	260	230	280	290	330	360	475	555	580	665	420	450	475	480	-	-	-	-
Wt. kg app(F/E)	29	55	65	115	145	250	405	620	815	970	1215	1750	2360	-	3820	-	-	-	-



DIMENSION TABLE 900 CLASS

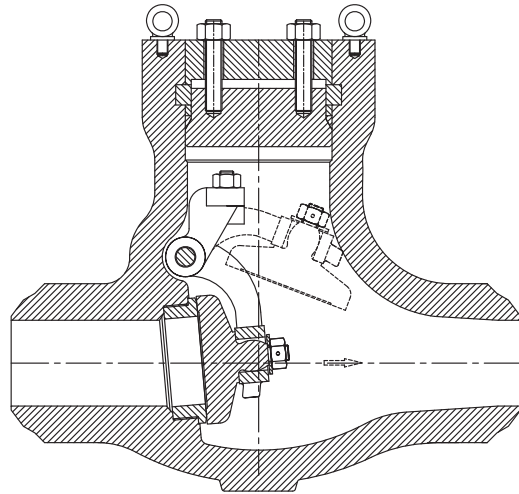
VALVE SIZE in mm	2 50	3 80	4 100	6 150	8 200	10 250	12 300	14 350	16 400	18 450	20 500	22 550	24 600
L	14.5 368	15.0 381	18.0 457	24.0 610	29.0 737	33.0 838	38.0 965	40.5 1029	44.5 1130	47.9 1219	52.0 1321	-	60.9 1549
L1	14.5 368	15.0 381	18.0 457	24.0 610	29.0 737	33.0 838	38.0 965	40.5 1029	44.5 1130	47.9 1219	52.0 1321	-	60.9 1549
H app	220	280	350	450	525	600	675	750	825	-	-	-	-

DIMENSION TABLE 1500 CLASS

VALVE SIZE in mm	2 50	3 80	4 100	6 150	8 200	10 250	12 300	14 350	16 400	18 450	20 500	22 550	24 600
L	14.5 368	18.5 470	21.5 546	27.7 705	32.7 832	39.0 991	44.5 1130	49.4 1257	54.4 1384	60.5 1537	65.5 1664	-	76.4 1943
L1	14.5 368	18.5 470	21.5 546	27.7 705	32.7 832	39.0 991	44.5 1130	49.4 1257	54.4 1384	60.5 1537	65.5 1664	-	76.4 1943
H app	220	280	370	450	600	660	750	-	-	-	-	-	-

DIMENSION TABLE 2500 CLASS

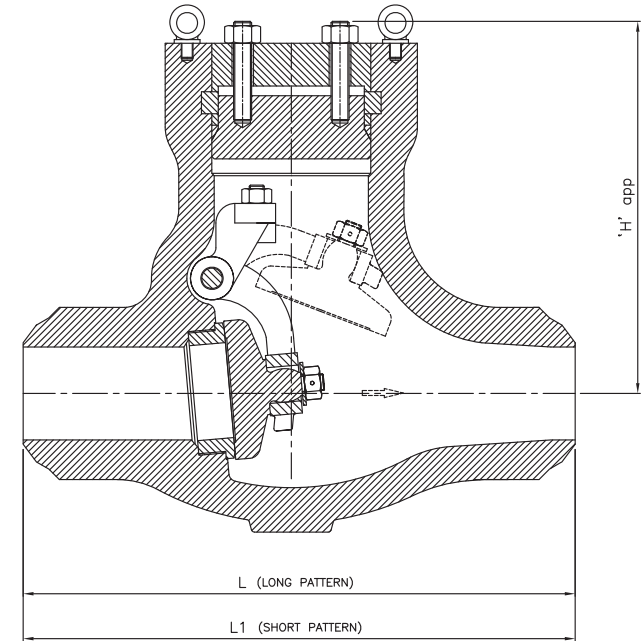
VALVE SIZE in mm	2 50	3 80	4 100	6 150	8 200	10 250	12 300	14 350	16 400
L	17.7 451	22.7 578	26.5 673	36.0 914	40.2 1022	50.0 1270	55.9 1422	-	-
L1	17.7 451	22.7 578	26.5 673	36.0 914	40.2 1022	50.0 1270	55.9 1422	-	-
H app	305	390	415	565	640	-	-	-	-



MATERIAL SPECIFICATION

PART NAME	MATERIAL		MATERIAL	
BODY	A 216 WCB	A 217 WC6	A 351 CF8	A 351 CF8M
DISC	CA15/13% Cr FACING ON WCB+STELLITED	WC6+STELLITED	A 351 CF8+STELLITED	A 351 CF8M+STELLITED
SEAT RING 1	A 515-70/13%Cr.+STELLITED	SS 304+STELLITED	T304+STELLITED	T316+STELLITED
TOP COVER	A 216 WCB	A 217 WC6	A 351 CF8	A 351 CF8M
INNER PLATE	A 216 WCB/A 515 70	A 217 WC6	SS 304	
STUD & NUT	A 193 B7/A 194 2H	A 193 B16/A 194 Gr.7	A 193 B8/A 194 Gr.8	
BRACKET STUD & NUT	A 193 B8/A 194 Gr.8		A 193 B8/A 194 Gr.8	
SEAL RING	T304		T304	T316
SPACER RING	A 515 70	T304	T304	T316
SEGMENTAL RING	A 515 70	T304	T304	T316
WASHER	SS 304		T304	T316
DISC NUT	A 194 Gr.8		A 194 Gr.8	
HINGE PIN	T410	T304	T304	T316
SPLIT PIN	T304		T304	T316
NAME PLATE	ALUMINIUM/S.S.		ALUMINIUM/S.S.	
HINGE	A 216 WCB	A 217 WC6	A 351 CF8	A 351 CF8M
HINGE BRACKET	A 216 WCB	A 217 WC6	A 351 CF8	A 351 CF8M
LIFTING EYE BOLT 2	ASTM A 105		ASTM A 105	

1- SEAL WELD
2- LIFTING EYE BOLT 4"NB AND ABOVE
3- DASHPOT ARRANGEMENT OPTIONAL



DIMENSION TABLE 900 CLASS

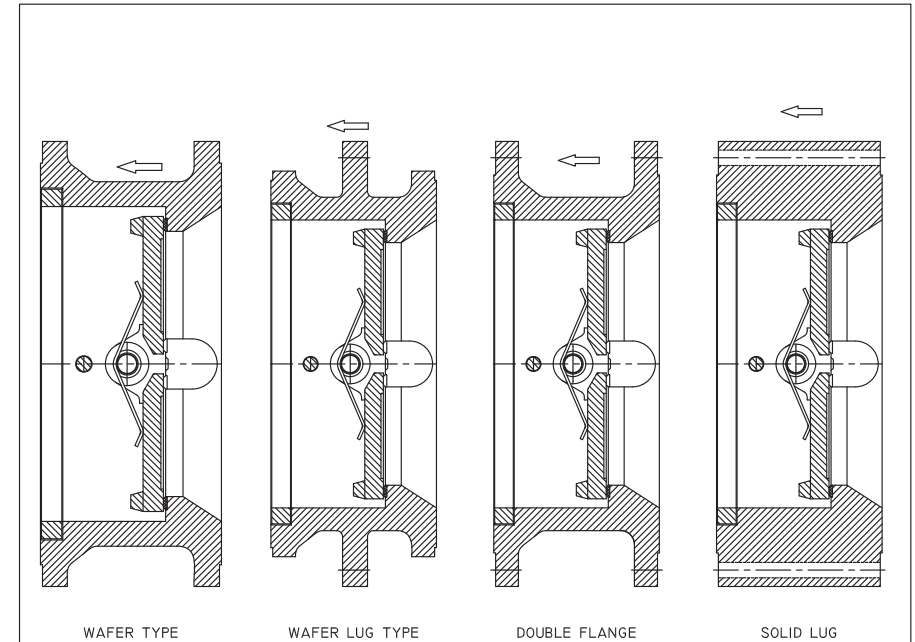
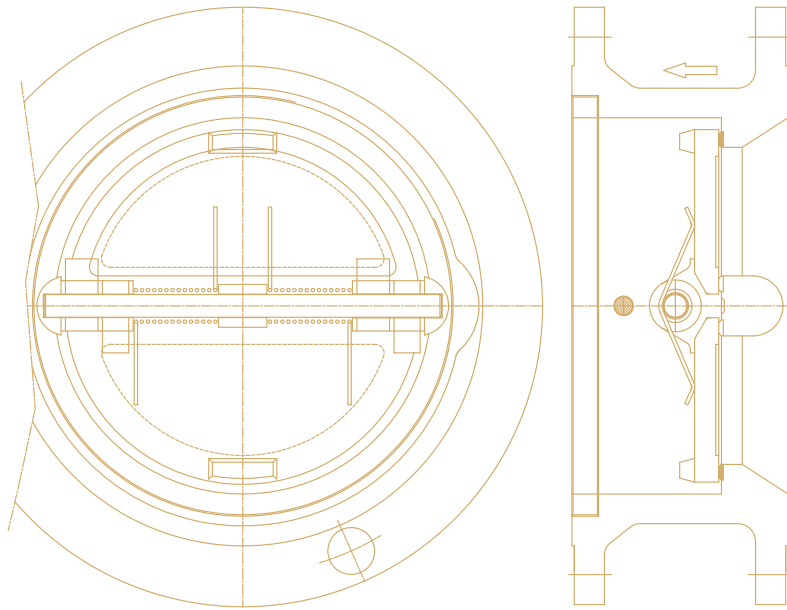
VALVE SIZE in mm	2		3		4		6		8		10		12		14		16		18		20		22		24	
	50	80	100	150	200	250	300	350	400	450	500	550	600	660	710	760	810	860	910	960	1010	1060	1110	1160	1210	1260
L	14.5	15.0	18.0	24.0	29.0	33.0	38.0	40.5	44.5	-	-	-	-	-	-	-	-	-	-	-	-	-	-	-	-	-
L1	8.5	12.0	14.0	20.0	26.0	31.0	36.0	39.0	43.0	-	-	-	-	-	-	-	-	-	-	-	-	-	-	-	-	-
H app	240	280	350	450	525	600	710	825	930	-	-	-	-	-	-	-	-	-	-	-	-	-	-	-	-	-

DIMENSION TABLE 1500 CLASS

VALVE SIZE in mm	2		3		4		6		8		10		12		14		16		18		20		22		24	
	50	80	100	150	200	250	300	350	400	450	500	550	600	660	710	760	810	860	910	960	1010	1060	1110	1160	1210	1260
L	14.5	18.5	21.5	27.7	32.7	39.0	44.5	-	-	-	-	-	-	-	-	-	-	-	-	-	-	-	-	-	-	-
L1	8.5	12.0	16.0	22.0	28.0	34.0	39.0	42.0	47.0	-	-	-	-	-	-	-	-	-	-	-	-	-	-	-	-	-
H app	260	300	370	460	615	660	750	-	-	-	-	-	-	-	-	-	-	-	-	-	-	-	-	-	-	-

DIMENSION TABLE 2500 CLASS

VALVE SIZE in mm	2		3		4		6		8		10		12		14		16	
	50	80	100	150	200	250	300	350	400	450	500	550	600	660	710	760	810	860
L	17.7	22.7	26.5	36.0	40.2	50.0	-	-	-	-	-	-	-	-	-	-	-	-
L1	11.0	14.5	18.0	24.0	30.0	36.0	41.0	-	-	-	-	-	-	-	-	-	-	-
H app	330	368	432	508	762	640	-	-	-	-	-	-	-	-	-	-	-	-



WAFER TYPE

WAFER LUG TYPE

DOUBLE FLANGE

SOLID LUG

MATERIAL SPECIFICATION

PART NAME	MATERIAL		MATERIAL	
	A 216 WCB	A 217 WC6	A 351 CF8	A 351 CF8M
BODY	A 216 WCB+13%Cr.	A 217 WC6+13%Cr.	A 351 CF8	A 351 CF8M
PLATE	A 216 WCB+13%Cr.	A 217 WC6+13%Cr.	A 351 CF8	A 351 CF8M
SEAT	A 216 WCB+13%Cr.	A 217 WC6+13%Cr.	A 351 CF8	A 351 CF8M
DISC BEARING	T410		T304	T316
SPACER BUSH	T410		T304	T316
SPRING BEARING	T410		T304	T316
BODY BEARING	T410		T304	T316
HINGE PIN	T304		T304	T316
STOPPER PIN	T304		T304	T316
LIFTING HOOK	ASTM A 105			
CARRIER PLATE	T410		T304	T316
LOCKING RING	ASTM A 515 Gr.70	SS304	SS304	SS316
SPRING	INCONEL			

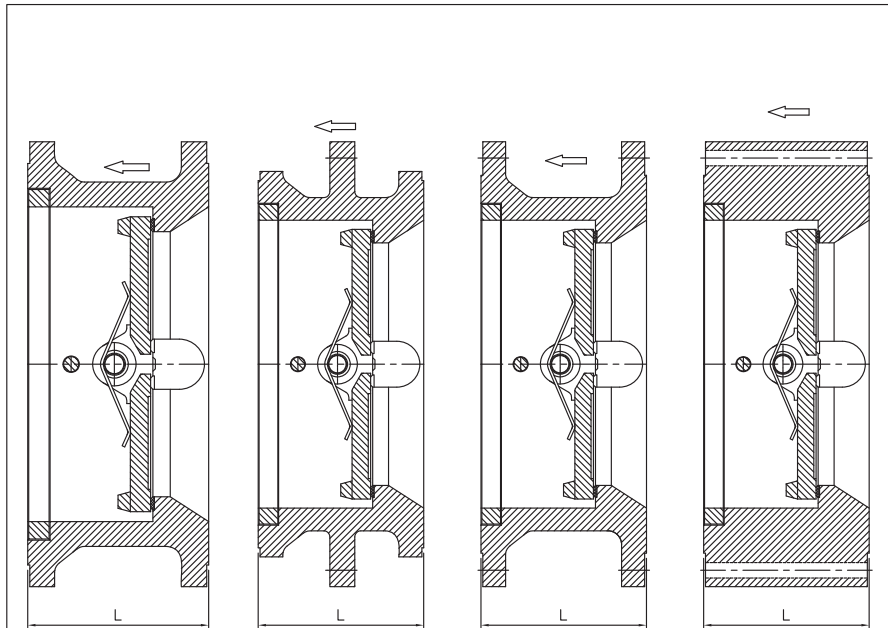
1- SEAT INTEGRAL

05

DUAL PLATE CHECK VALVE

DUAL PLATE CHECK VALVE CLASS 150, 300, 600.

API 594



WAFER TYPE

WAFER LUG TYPE

DOUBLE FLANGE

SOLID LUG

DIMENSION TABLE 150 CLASS

VALVE SIZE in mm	2 50	2.5 65	3 80	4 100	6 150	8 200	10 250	12 300	14 350	16 400	18 450	20 500	24 600	30 750	36 900	42 1050	48 1200	54 1350	60 1500
L	2.38 60	2.62 67	2.88 73	2.88 73	3.88 98	5.0 127	5.75 146	7.12 181	7.25 184	7.50 191	8.0 203	8.62 219	8.75 222	12.0 305	14.5 368	17.0 432	20.6 524	*	*

DIMENSION TABLE 300 CLASS

VALVE SIZE in mm	2 50	2.5 65	3 80	4 100	6 150	8 200	10 250	12 300	14 350	16 400	18 450	20 500	24 600	30 750	36 900	42 1050	48 1200	54 1350	60 1500
L	2.38 60	2.62 67	2.88 73	2.88 73	3.88 98	5.0 127	5.75 146	7.12 181	7.25 184	7.50 191	8.0 203	8.62 219	8.75 222	12.0 305	14.5 368	17.0 432	20.6 524	*	*

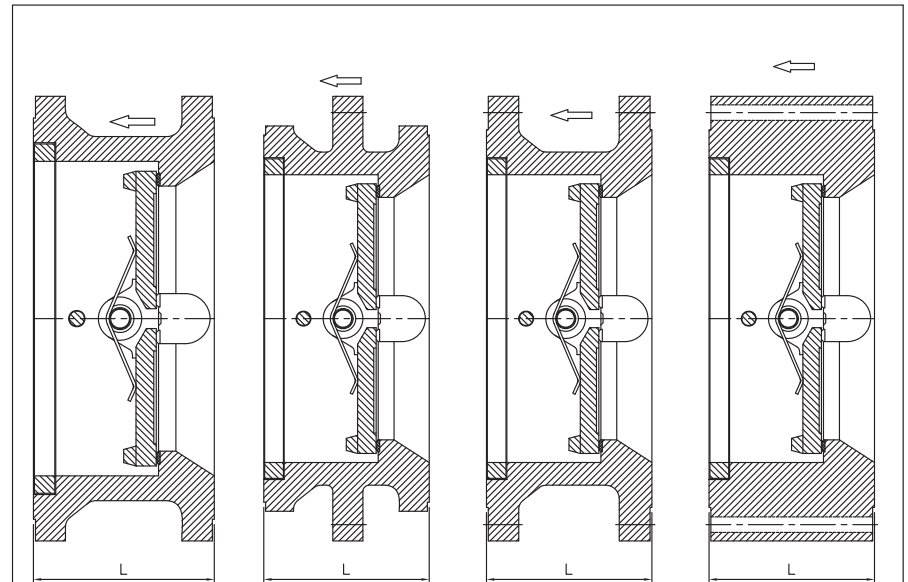
DIMENSION TABLE 600 CLASS

VALVE SIZE in mm	2 50	2.5 65	3 80	4 100	6 150	8 200	10 250	12 300	14 350	16 400	18 450	20 500	24 600	30 750	36 900	42 1050	48 1200	54 1350	60 1500
L	2.38 60	2.62 67	2.88 73	3.12 79	5.38 136	6.5 165	8.38 213	9.0 229	10.75 273	12.0 305	14.25 362	14.5 368	17.25 438	19.88 505	25.0 635	27.5 701	-	-	-

* DIMENSIONAL INFORMATION TO BE AGREED BETWEEN PURCHASER AND MANUFACTURER.

DUAL PLATE CHECK VALVE CLASS 900, 1500, 2500.

API 594



WAFER TYPE

WAFER LUG TYPE

DOUBLE FLANGE

SOLID LUG

DIMENSION TABLE 900 CLASS

VALVE SIZE in mm	2 50	2.5 65	3 80	4 100	6 150	8 200	10 250	12 300	14 350	16 400	18 450	20 500	24 600
L	2.75 70	3.25 83	3.25 83	4.0 102	6.25 159	8.12 206	9.5 241	11.5 292	14.0 356	15.12 384	17.75 451	17.75 451	19.5 495

DIMENSION TABLE 1500 CLASS

VALVE SIZE in mm	2 50	2.5 65	3 80	4 100	6 150	8 200	10 250	12 300	14 350	16 400	18 450	20 500	24 600
L	2.75 70	3.25 83	3.25 83	4.0 102	6.25 159	8.12 206	9.75 248	12.0 305	14.0 356	15.12 384	18.44 468	21.0 533	22.0 559

DIMENSION TABLE 2500 CLASS

VALVE SIZE in mm	2 50	2.5 65	3 80	4 100	6 150	8 200	10 250	12 300	14 350	16 400
L	2.75 70	3.25 83	3.38 86	4.12 105	6.25 159	8.12 206	10.0 254	12.0 305	-	-

* DIMENSIONAL INFORMATION TO BE AGREED BETWEEN PURCHASER AND MANUFACTURER.